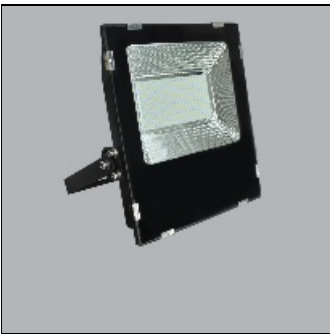


Product data sheet

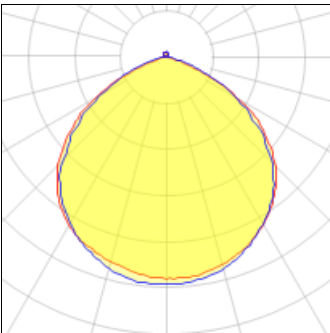
LED FLOOD LIGHT FLD 100W 6500K
FLD_100T
MPE



IP
65

- Led flood light - Lamp body made of powder coated aluminum - Lighting surface is protected by tempered glass - Ingress Protection IP65 - Driver is integrated inside the lamp - Size: 350 x 295 x 65 mm - Voltage: 100-265VAC - Power: 100W - Power Factor (PF): >0.5 - Luminance: 8000 lm - Luminous Efficacy: 80 lm/W - Color Temperature (CCT): 6000-6500K - RA >80 High Color Rendering Index - Beam angle: 120° - Chip LED: SMD 2835 - Life Time: 30,000 hours - Instant Light: 0s - European Standard CE – RoHS

Light output 1



1 x LED			
Nominal lamp power	100 W	LOR	101%
Lamp flux	8500 lm	ULOR	3%
Luminous efficacy	86 lm/W	Total flux	8624 lm
CCT	6500 K	Total power	100 W
CRI	83		

Mounting mode

Pole top mounted

Shape and measurements

Length: 13.82 in
Width: 11.61 in
Height: 2.56 in

Adjustability

Fixed

Electric

System power: 100 W

Protection

IP: 65