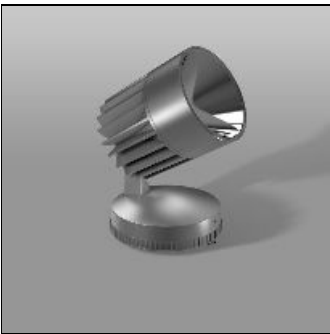


# Product data sheet

ALU-STAR MAXI  
721812.004.76  
RZB

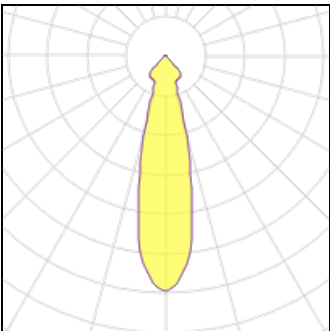


IP  
65

IK  
07

Series: ALU-STAR maxi High efficient LED outdoor floodlight. Housing made of corrosion-resistant die-cast aluminium, seawater resistant powder-coated. Thermally decoupled driver compartment, integral driver. With membrane valve as a standard to avoid condensed water. Rotation-symmetric reflector made of reflex-boosted MIRO-SILVER. Cover clear single-pane toughened glass. Spot, medium beam. COB LED with socket for easy replacement. Stainless steel fixing clips with compensation for drill hole deviations. Rotation angle can be adjusted and locked in 3,6° steps, tilt angle in 5° steps with angular scale. Piano-key terminal up to 28x5x2,5 mm², max cable Ø 13mm, comes with second cable gland for loop through. Colour: silver, matt (approx. RAL9006) Length: 305mm Width: 240mm Height: 310mm Lamp: LED System power: 88W Rated luminous flux: 9700lm Luminous efficiency: 110lm/W Control gear: Converter, dimmable, DALI Protection class: I Type of protection: IP65

## Light output 1 (integrated)



Lamp type	LED	CCT	3000 K
Nominal lamp power	88 W	CRI	80
Total flux	9700 lm	LOR	100%
Luminous efficacy	110 lm/W	Total power	88 W

## Mounting mode

Standing / Bollard, Pole integrated

## Shape and measurements

Length: 9.45 in

Width: 12.01 in

Height: 12.20 in

## Adjustability

Tiltable

## Electric

System power: 88 W

## Protection

IP: 65

IK: 07