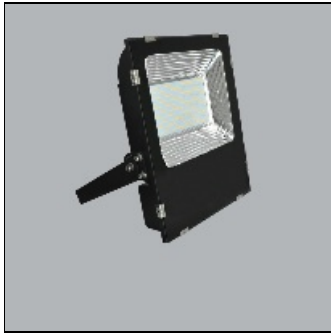


Product data sheet

LED FLOOD LIGHT FLD 150W 6500K

FLD_150T

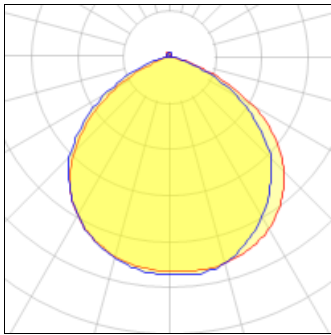
MPE



IP
65

- Led flood light - Lamp body made of powder coated aluminum - Lighting surface is protected by tempered glass - Ingress Protection IP65 - Driver is integrated inside the lamp - Size: 395 x 315 x 75 mm - Voltage: 100-265VAC - Power: 150W - Power Factor (PF): >0.5 - Luminance: 12000 lm - Luminous Efficacy: 80 lm/W - Color Temperature (CCT): 6000-6500K - RA >80 High Color Rendering Index - Beam angle: 120° - Chip LED: SMD 2835 - Life Time: 30,000 hours - Instant Light: 0s - European Standard CE – RoHS

Light output 1



1 x LED

Nominal lamp power	150 W	LOR	98%
Lamp flux	12750 lm	ULOR	3%
Luminous efficacy	84 lm/W	Total flux	12557 lm
CCT	6500 K	Total power	150 W
CRI	83		

Mounting mode

Pole top mounted

Shape and measurements

Length: 15.55 in

Width: 12.40 in

Height: 2.95 in

Adjustability

Fixed

Electric

System power: 150 W

Protection

IP: 65