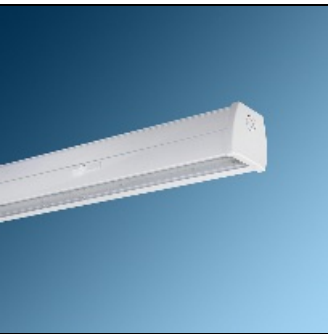


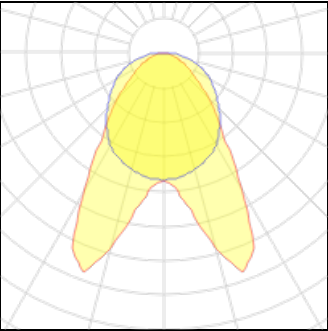
Product data sheet

LUMILINE 2600 LM 17W LOW POWER LED SURFACE MOUNT OR SUSPENDED LINEAR LED LUMINAIRE , DOUBLE ASYMM...
M457SA60LED2840-W
MAZINOOR



LUMiLINE Surface Mount or Suspended Linear LED Luminaire with Lens Suitable for hypermarkets, warehouses, shops, ... applications where symmetrical, asymmetrical, or double asymmetrical lighting is required together with glare control, uniform light distribution, and light direction control.

Light output 1 (integrated)



Lamp type	LED	CCT	4000 K
Nominal lamp power	17 W	CRI	80
Total flux	2600 lm	LOR	100%
Luminous efficacy	153 lm/W	Total power	17 W

Mounting mode

Ceiling mounted, Pendant

Electric

System power: 17 W

Shape and measurements

Length: 23.62 in
Width: 2.87 in
Height: 2.83 in

Adjustability

Fixed