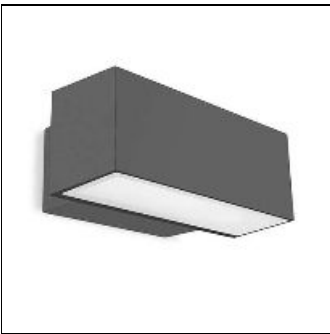


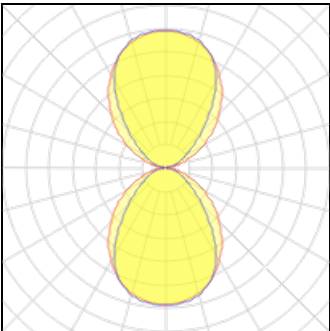
Product data sheet

AFRODITA LED 300MM DOUBLE EMISSION
05-E048-Z5-CM
LEDSC4



LedsC4 Afrodita LED 300mm Double Emission 05-E048-Z5-CMV1 Wall fixture for outdoor use. For uplighting and downlighting. Structure material: Aluminium. Structure finish: Urban grey. Diffuser material: Glass. Diffuser finish: Partly-sandblasted. UV protection. Warranty: 5 Years. Product net weight (Kg): 2.49 Product width or diameter (mm): 300 Product height (mm): 120 Product aperture (mm): 178 Class 1. IP: IP66. IK: IK04. LED. No. of lampholders or LEDs: 1. Driver brand: TCI. Maximum power of light source: 37.6W. Colour temperature: 4000K. Colour rendering index: 80. MacAdam Steps: 3. Hours of life: 50.000h L80B20. UGR: 19.2. Photobiological risk: RG0. % de Flickering: <5%. Real flux (lm): 4216. Real lm/W: 104. Voltage / frequency range: 220-240/50-60Hz. Voltage: 9. Equipment included: Yes. Total power: 40.7. Power factor: 0.95. Dimmable equipment included: DALI-2/PUSH.

Light output 1



1 x LED			
Nominal lamp power	40.7 W	LOR	100%
Lamp flux	3833 lm	Total flux	3833 lm
Luminous efficacy	94 lm/W	Total power	40.7 W
CCT	4000 K		
CRI	80		

Mounting mode

Wall mounted

Shape and measurements

Length: 11.81 in
Width: 6.69 in
Height: 4.72 in

Adjustability

Fixed

Electric

System power: 40.7 W
Appliance Class: I

Protection

IP: 66
IK: 04