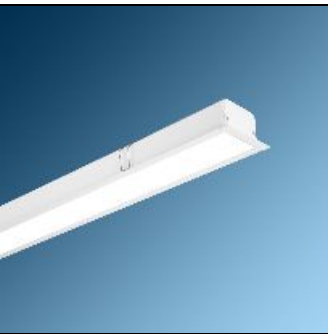


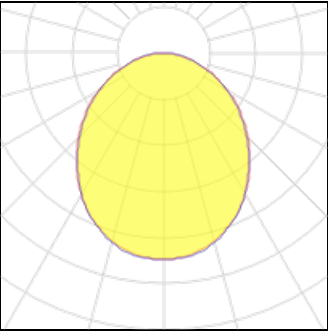
# Product data sheet

INFINITY-DS 4500 LM 46W LOW POWER LED RECESSED CONTINUOUS LIGHT BAR LUMINAIRE , ACRYLIC DIFFUSER , WH..  
M440DS1453LED2AF-W  
MEGALITE



INFINITY-DS Recessed Continuous Light Bar is Mazinoor state of the art design for continuous light bar application. Aesthetically designed INFINITY-DS is offered in LED versions with unparalleled performance. Uniform light distribution, energy saving, glare control are among the highlights of this luminaire.

## Light output 1 (integrated)



Lamp type	LED	CCT	4000 K
Nominal lamp power	46 W	CRI	80
Total flux	4500 lm	LOR	100%
Luminous efficacy	98 lm/W	Total power	46 W

## Mounting mode

Ceiling recessed

## Electric

System power: 46 W

## Shape and measurements

Length: 57.09 in  
Width: 2.76 in  
Height: 3.35 in

## Adjustability

Fixed