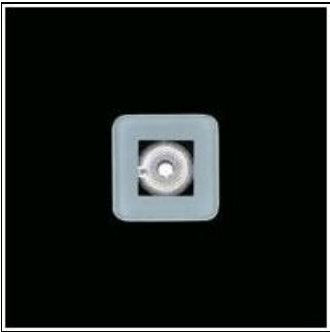


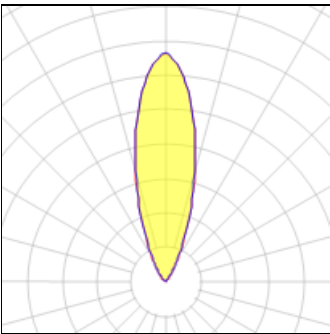
Product data sheet

TAPIOCA LED
10017541
FLOS



• Recessed luminaire for outdoor installation in wall, ceiling or floor. • Configuration: die-cast aluminium structure EN AB-47100 alloy (low copper content) available in round and square version. • Double layer coating for high resistance to corrosion: The low copper Aluminium alloy is painted with a double coat using powders which are complaint with QUALICOAT standards: a first layer of epoxy powder (with excellent chemical and mechanical resistance) and a second finishing layer of polyester powder (resistant to UV rays and atmospheric agents).The entire painting process of the aluminium fitting starts from components which have been sand-blasted in advance to make the surface more porous and increase the adherence of the paint. Ares effects alkaline and acid washing to clean the surfaces completely, then rinses with demineralised water to remove any residue particles, subsequently a chemical conversion treatment is done to protect against rusting. • The luminaire is composed of a wiring unit connected to an emitting unit with different designs: only glass-round and square; anodized aluminium frame-only round. The glass is fixed to the aluminium structure through a robotic gluing system. • Tempered transparent or sandblasted glass.

Light output 1 (integrated)



Lamp type	LED	CCT	6000 K
Nominal lamp power	2.3 W	CRI	70
Total flux	115 lm	LOR	100%
Luminous efficacy	50 lm/W	ULOR	100%
		Total power	2.3 W

Mounting mode

Floor recessed

Shape and measurements

Length: 1.57 in
Width: 1.57 in
Height: 2.76 in

Adjustability

Fixed

Electric

System power: 2.3 W
Appliance Class: III

Protection

IP: 67
IK: 08