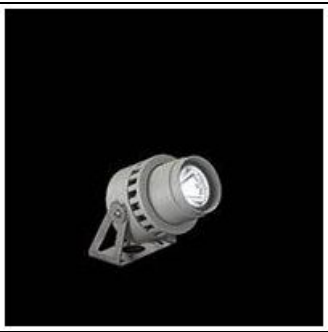


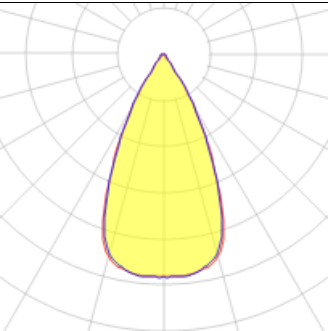
# Product data sheet

SPOCK75 LED  
541004  
FLOS



• Adjustable LED luminaire for outdoor installation on ceiling, wall and ground. • Configuration: die-cast aluminium structure. EN AB 47100 alloy (low copper content) and AISI 316L stainless steel fixing bracket • Double layer coating for high resistance to corrosion: The low copper Aluminium alloy is painted with a double coat using powders which are complaint with QUALICOAT standards: a first layer of epoxy powder (with excellent chemical and mechanical resistance) and a second finishing layer of polyester powder (resistant to UV rays and atmospheric agents).The entire painting process of the aluminium fitting starts from components which have been sand-blasted in advance to make the surface more porous and increase the adherence of the paint. Ares effects alkaline and acid washing to clean the surfaces completely, then rinses with demineralised water to remove any residue particles, subsequently a chemical conversion treatment is done to protect against rusting. • The luminaire has three connected parts: wiring unit (silicone gasket), heat sink and emitting unit (silicone glue). A graduated fixing plate allows a precise adjustment of the emitting unit. • Tempered transparent extra clear glass diffuser with silkscreen border. The glass is fixed through a robotic gluing system. • Protection Rating: IP66 • In compliance with EN60598-1 standards • Class of insulation: I • Installation: the luminaire is equipped with one M16 (Spock 75, 95) or M20 (Spock130) nickel plated brass cable gland and a piece of neoprene cable (approx. 1m) for an easy-to-make connection. • We recommend the use of a connection system with a protection degree greater than or equal to the protection degree of the luminaire.

## Light output 1 (integrated)



Lamp type	LED	CCT	5000 K
Nominal lamp power	12 W	CRI	70
Total flux	787 lm	LOR	100%
Luminous efficacy	66 lm/W	Total power	12 W

## Mounting mode

Wall mounted

## Shape and measurements

Height: 2.95 in  
Diameter: 2.95 in

## Adjustability

Tiltable

## Electric

System power: 12 W  
Appliance Class: I

## Protection

IP: 66  
IK: 07