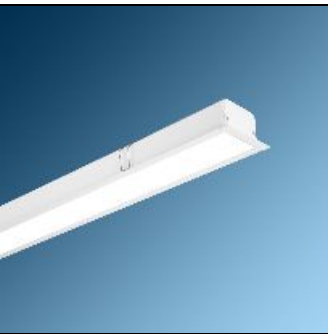


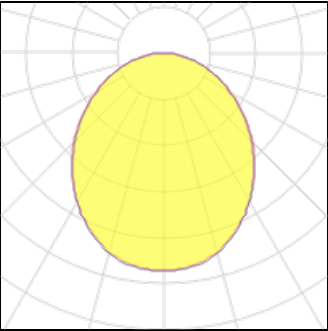
# Product data sheet

INFINITY-DS 6200 LM 54W LOW POWER LED RECESSED CONTINUOUS LIGHT BAR LUMINAIRE , ACRYLIC DIFFUSER , WH..  
M440DSS200LED2AFK3-W  
MAZINOOR



INFINITY-DS Recessed Continuous Light Bar is Mazinoor state of the art design for continuous light bar application. Aesthetically designed INFINITY-DS is offered in LED versions with unparalleled performance.Uniform light distribution, energy saving, glare control are among the highlights of this luminaire.

## Light output 1 (integrated)



Lamp type	LED	CCT	4000 K
Nominal lamp power	54 W	CRI	70
Total flux	6200 lm	LOR	100%
Luminous efficacy	115 lm/W	Total power	54 W

## Mounting mode

Ceiling recessed, Pendant

## Electric

System power: 54 W

## Shape and measurements

Length: 78.74 in  
Width: 2.76 in  
Height: 3.35 in

## Adjustability

Fixed