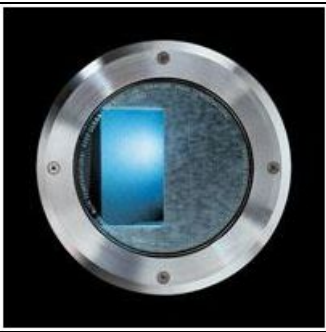


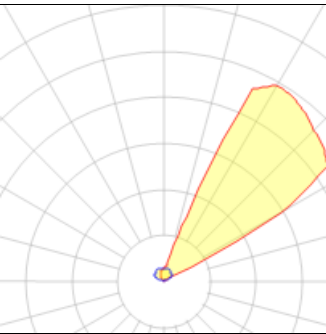
# Product data sheet

PETRA  
073514  
FLOS



• Recessed round luminaire for outdoor installation in the ground. • Configuration: die-cast aluminium structure. EN AB-47100 alloy (low copper content). AISI 316L stainless steel frame. • Double layer coating for high resistance to corrosion: The low copper Aluminium alloy is painted with a double coat using powders which are compliant with QUALICOAT standards: a first layer of epoxy powder (with excellent chemical and mechanical resistance) and a second finishing layer of polyester powder (resistant to UV rays and atmospheric agents). The entire painting process of the aluminium fitting starts from components which have been sand-blasted in advance to make the surface more porous and increase the adherence of the paint. Ares effects alkaline and acid washing to clean the surfaces completely, then rinses with demineralised water to remove any residue particles, subsequently a chemical conversion treatment is done to protect against rusting. • Tempered transparent or sandblasted glass (no-slip glass VA on request) and moulded silicone gasket.

## Light output 1



1 x Metal halide lamp			
Nominal lamp power	35 W	Socket	G12
Lamp flux	3300 lm	LOR	10%
Luminous efficacy	9 lm/W	ULOR	10%
CCT	3000 K	Total flux	325 lm
CRI	81	Total power	35 W

## Mounting mode

Floor recessed

## Shape and measurements

Height: 8.62 in  
Diameter: 8.66 in

## Adjustability

Fixed

## Electric

System power: 35 W  
Appliance Class: I

## Protection

IP: 67  
IK: 09