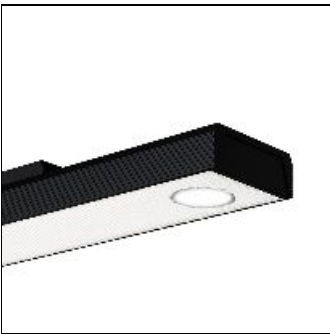


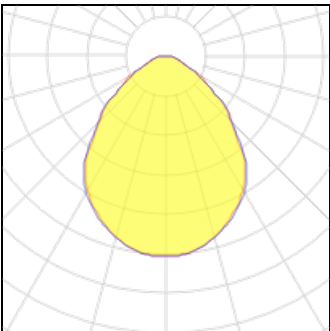
Product data sheet

3F HAL150 BK 33/830+1SL10 D LGS L18
6918
3F FILIPPI



ILLUMINOTECHNICAL Luminous efficiency 100% (DLOR 100%, ULOR 0%). Initial luminous flux of the luminaire 5213 lm. Direct symmetric distribution. Installation Interdistance Transv.D = 1.16 x hu - Long.D = 1.18 x hu. Average luminance <3000 cd/m² for radial angles >65°. Tabular UGR (CIE 117 - 4H-8H; S=0.25H; 70/50/20): RUG 19.2 - 19.4. Beam angle: 86° - 87°. Luminous efficacy 106 lm/W. Lifetime (L93/B10): 30000 h. (tq+25°C) Lifetime (L90/B10): 50000 h. (tq+25°C) Lifetime (L85/B10): 80000 h. (tq+25°C) Lifetime (L80/B10): 100000 h. (tq+25°C) Sudden decreased luminous flux after 50000 hours: 0% (C0). Photobiological safety in compliance with IEC/TR 62778: RG0 risk exempt, (IEC 62471). In compliance with IEC/EN 62722-2-1 - IEC/EN 62717 standards. SOURCE Linear LED module 33W/830 + compact LED module 10W/830. Energy efficiency class (UE 2019/2020 - UE 2019/2015): C, D. CIE 13.3 Colour rendering index: CRI >80 (R9 <50%). IES TM-30 Fidelity Index: Rf = 84 Rg = 95. CCT nominal colour temperature 3000 K. Colour initial tolerance (MacAdam): SDCM 3. MECHANICAL Extruded aluminium housing with linear side grooves. Steel end caps. Black colour body and heads RAL 9011 matt. Removable flow recuperator. LGS micro-prismatic flat diffuser in transparent methacrylate (PMMA), multi-lenticular exterior, anti-glare. Anti-glare opal polycarbonate filter for brightness uniformity. Invisible interior spot in lateral position for accent or service lighting. Internal parabolic element in black aluminium. Luminaire with limited surface temperature. - D - (EN 60598-2-24) Dimensions: 1800x150 mm, height 81 mm. Weight 8 kg. IP40 protection degree. Mechanical strength to impacts IK02 (0.2 joule). Glow-wire test resistance 650°C. ELECTRICAL Halogen Free DALI, PUSH-DIM, electronic wiring 230V-50/60Hz, power factor 0.90 at full load, THD <25%, constant output current, SELV, class I, 2 driver, 2 DALI addresses. Power of the luminaire 49 W. CE - IEC 60598-1 - EN 60598-1. SAFE FLICKER: PstLM=<1 and SVM=<0.4 (IEC TR 61547-1 and IEC TR 63158), to ensure a more comfortable and safe light. Luminaire compliant with EN 60598-2-22 for power supply from a centralised emergency system CPSS (Central Power Supply System), not incorporated in the luminaire - high risk areas excluded. The default power and flux are 100% in AC and 15% (Direct) - 100% (Spot) in DC. Ambient temperature from 0°C to +25°C. Temperature class T6 max 85°C. 5-pole terminal block, single 230V circuit. 5-pole transparent power cable protrudes by 1.5 m with sheared end. Relative humidity UR: <85%. INSTALLATION Ceiling / Suspended. All accessories dedicated to this product are available on the Catalog and on our website www.3F-Filippi.com. APPLICATIONS Environments: with VDTs, meeting rooms, offices. Environments: architectural, commercial, staterooms, banks. Environments where dynamic, soft and diffuse light is required for optimal visual comfort. LIGHT MANAGEMENT Recommended minimum setting: 10%. The device, equipped with more than one DALI driver, can be controlled manually with 3F Easy Dim technology or automatically/manually with 3F Smart Dimming technology. DALI Broadcast allows a unique adjustment of the drivers; independent adjustments of DALI driver with addressable DALI systems. In electrical systems without a regulation system (manual or automatic) and DALI bus, a suitable jumper must be made on the DA-DA terminals of the appliance. WARNING Luminaire designed for disposal/recycling at end-of-life. Replaceable (LED only) light source by a professional. Replaceable control gear by a professional.

Light output 1 (integrated)



Lamp type	LED	CCT	3000 K
Nominal lamp power	49 W	CRI	80
Total flux	5213 lm	LOR	100%
Luminous efficacy	106 lm/W	Total power	49 W

Mounting mode

Ceiling mounted

Shape and measurements

Length: 70.87 in

Width: 5.91 in

Height: 3.19 in

Adjustability

Fixed

Design

Color of housing: Black

Electric

System power: 49 W

Appliance Class: I

Protection

IP: 40

IK: 02