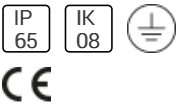
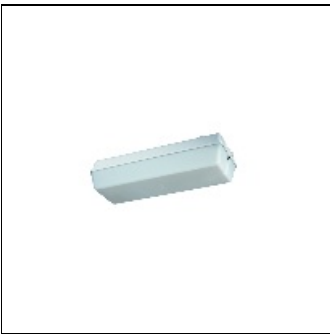


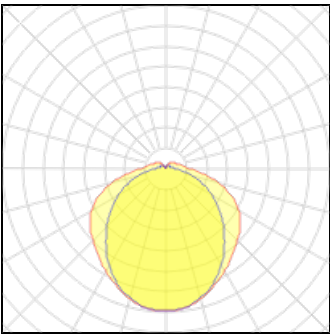
# Product data sheet

131 LED EMERGENCY LIGHT FITTING  
131 L02/3 W MA (13112 0031)  
SCHUCH



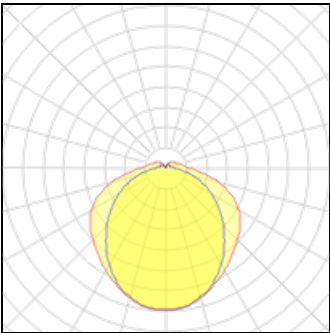
LED emergency light fitting, 5 W, 240 lm, 48 lm/W, Self-contained battery, Self test, Emergency operating time 3 h, 240 lm, Class I, IP65, symmetrical wide beam, 6500 K, CRI≥ 80, Ta 0 °C/+30 °C, L80>50000 h (@ Ta max), Diffuser PC opal, Closure Stainless steel (1.4301), Housing Plastic (PC), Colour white, for food areas. Small high impact resistant LED damp-proof emergency light fitting with self-contained battery and automatic monitoring according to EN62034. PC housing, opalescent-white PC diffuser, with multiple hinge at one side, captive screws for closing the light fitting and silicone gasket. Powder-coated reflector with ECG and LED module. NiMH battery with electronic charger and deep discharge protection. Automatic monitoring with optical indication of the test results. Resource-saving and environmentally friendly thanks to interchangeability of components (no disposable light fitting). Length 338,00 mm, Width/Diameter 120,00 mm, Height 90,00 mm, Net weight 1,20 kg.

## Light output 1 (integrated, emergency)



Lamp type	LED	CCT	6500 K
Nominal lamp power	5 W	CRI	80
Total flux	240 lm	LOR	100%
Luminous efficacy	48 lm/W	ULOR	7%
		Total power	5 W

## Light output 2 (integrated)



Lamp type	LED	CCT	6500 K
Nominal lamp power	5 W	CRI	80
Total flux	240 lm	LOR	100%
Luminous efficacy	48 lm/W	ULOR	7%
		Total power	5 W

## Mounting mode

Ceiling mounted, Wall mounted

## Shape and measurements

Length: 13.31 in  
Width: 4.72 in  
Height: 3.54 in

## Electric

System power: 10 W  
Appliance Class: I

## Information regarding emergency functions

Supplementary emergency lighting  
Emergency sign: N/A

## Adjustability

Fixed

## Protection

IP: 65

IK: 08

Designation labels: CE