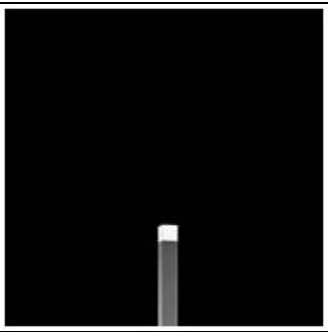


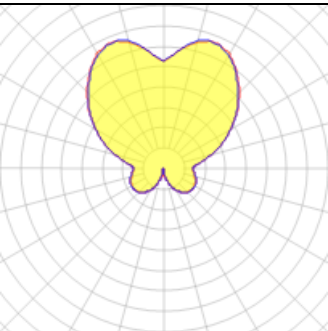
Product data sheet

LAMBDA LED
515031
FLOS



• Bollard for outdoor installation on floor. • Configuration: Extruded aluminium body, aluminium base with 15 micron anodizing for high resistance to corrosion. Methacrylate diffuser. Double layer coating for high resistance to corrosion: The aluminium components are painted with a double coat using powders which are complaint with QUALICOAT standards: a first layer of epoxy powder (with excellent chemical and mechanical resistance) and a second finishing layer of polyester powder (resistant to UV rays and atmospheric agents).The entire painting process of the aluminium fitting starts from components which have been sand-blasted in advance to make the surface more porous and increase the adherence of the paint. Ares effects alkaline and acid washing to clean the surfaces completely, then rinses with demineralised water to remove any residue particles, subsequently a chemical conversion treatment is done to protect against rusting.

Light output 1 (integrated)



| | | | |
|--------------------|---------|-------------|--------|
| Lamp type | LED | CCT | 6000 K |
| Nominal lamp power | 2.3 W | CRI | 70 |
| Total flux | 96 lm | LOR | 100% |
| Luminous efficacy | 42 lm/W | ULOR | 70% |
| | | Total power | 2.3 W |

Mounting mode

Standing / Bollard

Shape and measurements

Length: 1.57 in

Width: 1.57 in

Height: 11.81 in

Adjustability

Fixed

Electric

System power: 2.3 W

Appliance Class: III

Protection

IP: 65

IK: 06