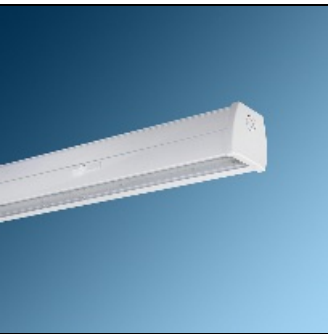


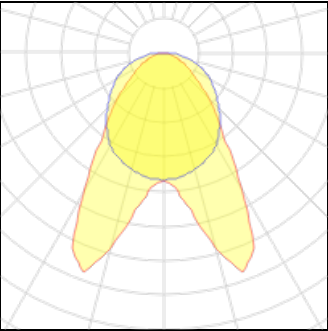
# Product data sheet

LUMILINE 5000 LM 32W LOW POWER LED SURFACE MOUNT OR SUSPENDED LINEAR LED LUMINAIRE , DOUBLE ASYMM...  
M457SDA115LED2865-W  
MAZINOOR



LUMiLINE Surface Mount or Suspended Linear LED Luminaire with Lens Suitable for supermarkets, warehouses, shops, ... applications where symmetrical, asymmetrical, or double asymmetrical lighting is required together with glare control, uniform light distribution, and light direction control.

## Light output 1 (integrated)



Lamp type	LED	CCT	6500 K
Nominal lamp power	32 W	CRI	80
Total flux	5000 lm	LOR	100%
Luminous efficacy	156 lm/W	Total power	32 W

## Mounting mode

Ceiling mounted, Pendant

## Electric

System power: 32 W

## Shape and measurements

Length: 45.28 in  
Width: 2.87 in  
Height: 2.83 in

## Adjustability

Fixed