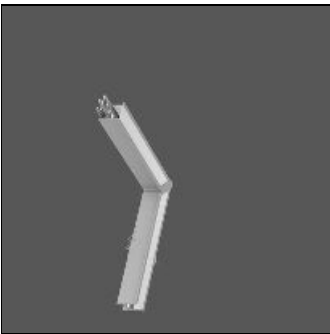


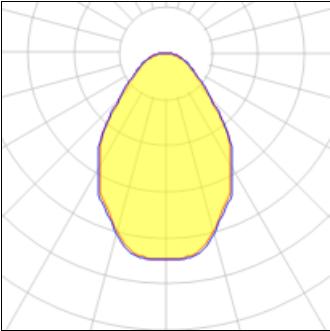
# Product data sheet

LOUI 27  
90-LM211-45L  
RZB



Recessed module LED/5,4W-4000K L238x238 Attention: This article is only available in combination with a Less is more 27 configuration. You can find our Less is more 27 configurator under <https://www.rzb.de/en/products/loui-configurator/>

## Light output 1 (integrated)



Lamp type	LED	CCT	4000 K
Nominal lamp power	6.9 W	CRI	80
Total flux	720 lm	LOR	100%
Luminous efficacy	104 lm/W	Total power	6.9 W

## Mounting mode

Wall recessed

## Shape and measurements

Length: 9.25 in  
Width: 9.25 in  
Height: 1.26 in

## Adjustability

Fixed

## Electric

System power: 6.9 W

## Protection

IP: 00