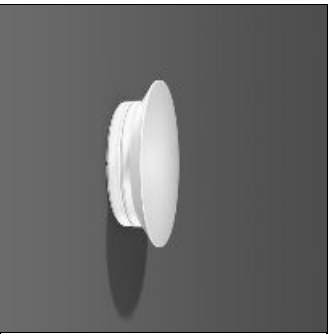


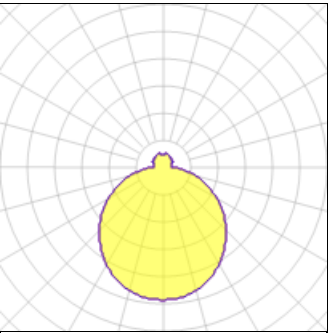
# Product data sheet

MONDANA-A  
551093.002.1.76  
RZB



Series: Mondana Type of Protection: IP 65 Protection Class: I Voltage: 220 - 240 V / 50 - 60 Hz Base: plastic, microtextured finish. Diffuser fastening: screw fitting. Diffuser: hand-blown opal glass, satin finish. With Gore-TM Protective Vents membrane valve as standard. Available Colours: pure white (RAL 9010) Type of Installation: Ceiling mounting, Wall (surface) Dimensions: D 500, H 128 Lamp: LED Life time: 50000 h (L70/B10) Colour Temperature: 3000K Socket 1: without socket Operating Mode Lamp 1: AC power, DALI dimmable Safety Marks: F-mark Impact Protection: IK03 (0,35 Joule) Luminaire flux LED: 1750lm System power: 21W Beam Angle: 116° Number of fittings B10A: 77 Number of fittings B16A: 124 Number of fittings C10A: 77 Number of fittings C16A: 124 Inrush current: 0,22A Unified Glare Ratio: 18,2 EEC: A+

## Light output 1 (integrated)



Lamp type	LED	CCT	3000 K
Nominal lamp power	21 W	CRI	80
Total flux	1750 lm	LOR	100%
Luminous efficacy	83 lm/W	ULOR	14%
		Total power	21 W

## Mounting mode

Wall mounted

## Shape and measurements

Height: 5.04 in  
Diameter: 19.69 in

## Adjustability

Fixed

## Design

Color of housing: White

## Electric

System power: 21 W

## Protection

IP: 65  
IK: 03