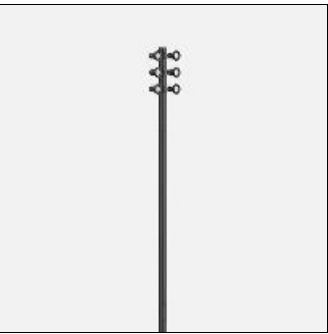


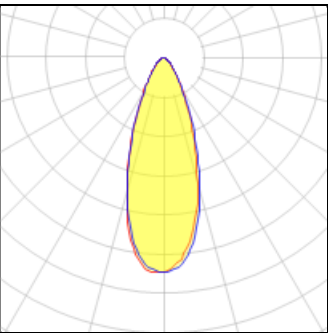
# Product data sheet

MIC 3 CLUSTER COLUMN PROJECTORS  
MI-21051-W-W40  
LIGMAN



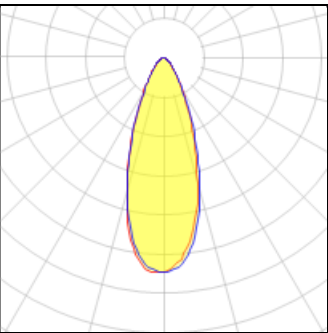
- Lamp LED - CRI Ra > 80 - MacAdam Ellipse 3 SDCM - Colour 3000K , 4000K - Life time L90B10 Ta 25° 200,000, 300,000 - Life time L80B10 Ta 50° 490,000, > 500,000 - Die-cast aluminium housing and extruded aluminium column pre-treated before powder coating ensuring high corrosion resistance - Single cable entry - Stainless steel fasteners in grade 316 - Durable silicone rubber gasket - High-efficiency PMMA lens - Clear tempered glass - Integral control gear installed in the pole top

## Light output 1 (integrated)



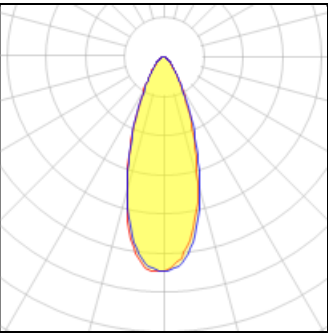
Lamp type	LED	CCT	4032 K
Nominal lamp power	28.8 W	CRI	80
Total flux	2926 lm	LOR	100%
Luminous efficacy	102 lm/W	Total power	28.8 W

## Light output 2 (integrated)



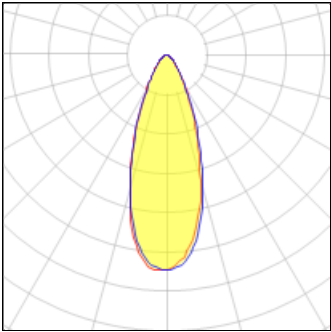
Lamp type	LED	CCT	4032 K
Nominal lamp power	28.8 W	CRI	80
Total flux	2926 lm	LOR	100%
Luminous efficacy	102 lm/W	Total power	28.8 W

## Light output 3 (integrated)



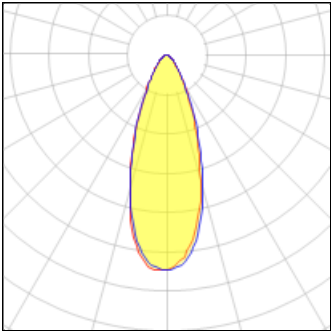
Lamp type	LED	CCT	4032 K
Nominal lamp power	28.8 W	CRI	80
Total flux	2926 lm	LOR	100%
Luminous efficacy	102 lm/W	Total power	28.8 W

Light output 4 (integrated)



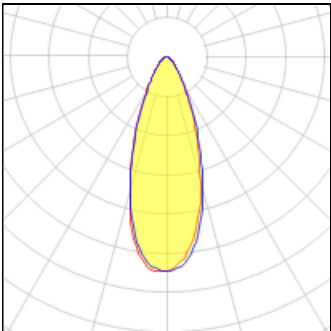
Lamp type	LED	CCT	4032 K
Nominal lamp power	28.8 W	CRI	80
Total flux	2926 lm	LOR	100%
Luminous efficacy	102 lm/W	Total power	28.8 W

Light output 5 (integrated)



Lamp type	LED	CCT	4032 K
Nominal lamp power	28.8 W	CRI	80
Total flux	2926 lm	LOR	100%
Luminous efficacy	102 lm/W	Total power	28.8 W

Light output 6 (integrated)



Lamp type	LED	CCT	4032 K
Nominal lamp power	28.8 W	CRI	80
Total flux	2926 lm	LOR	100%
Luminous efficacy	102 lm/W	Total power	28.8 W

Mounting mode

Standing / Bollard, Wall mounted

Shape and measurements

Height: 216.54 in  
Diameter: 7.76 in  
Weight: 49.8 kg

Adjustability

Free

Design

Color of housing: Black, White, Silver gray

Glare protection

Glare protection: UGR < 19

Electric

System power: 172.8 W  
Voltage: 230 V AC  
Ballast: ECG  
Controller: Dimmable 1..10V, DALI  
Appliance Class: I

Protection

IP: 65  
IK: 07  
Surface temperature: 40°C