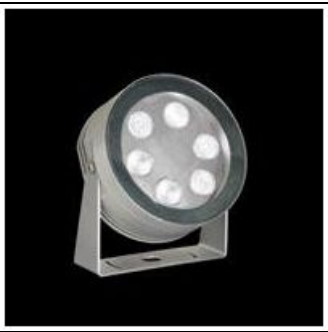


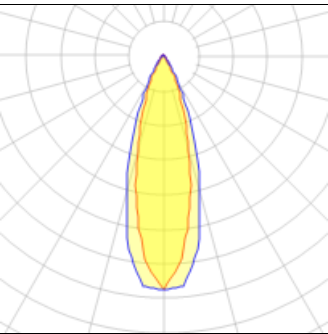
# Product data sheet

MAXIMARTINA AQUA LED  
1052661145  
FLOS



• Outdoor round spotlight • Configuration: Turned and anodized or painted aluminium structure with stainless steel adjustable bracket • Double layer coating for high resistance to corrosion: The aluminium components are painted with a double coat using powders which are compliant with QUALICOAT standards: a first layer of epoxy powder (with excellent chemical and mechanical resistance) and a second finishing layer of polyester powder (resistant to UV rays and atmospheric agents). The entire painting process of the aluminium fitting starts from components which have been sand-blasted in advance to make the surface more porous and increase the adherence of the paint. Ares effects alkaline and acid washing to clean the surfaces completely, then rinses with demineralised water to remove any residue particles, subsequently a chemical conversion treatment is done to protect against rusting. • Tempered transparent glass with silkscreen border, nitrile rubber gaskets. • Glass fixed to the structure through a robotic gluing system.

## Light output 1



1 x LED			
Nominal lamp power	10.2 W	LOR	98%
Lamp flux	435 lm	Total flux	428 lm
Luminous efficacy	48 lm/W	Total power	9 W
CCT	4000 K		
CRI	80		

## Mounting mode

Wall mounted

## Shape and measurements

Height: 2.20 in  
Diameter: 4.65 in

## Adjustability

Tiltable

## Electric

System power: 9 W  
Appliance Class: III

## Protection

IP: 68  
IK: 07