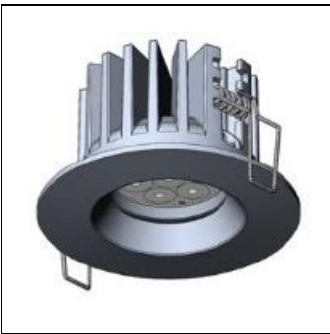


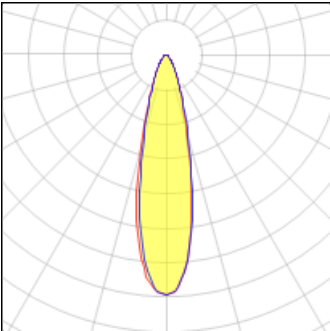
Product data sheet

MUNICH RECESSED DOWNLIGHTS
MUN-80001-M-W40
LIGMAN



- Lamp LED - CRI Ra > 80 - MacAdam Ellipse 3 SDCM - Colour Temperature 3000K ,4000K - Eco-friendly LED product for energy saving and visual consistency. - Modular design for easy maintenance with future proofing. - Propriety lens design for high LOR. - Reliable thermal management for long life and lumen maintenance. - Dimming options available. Excellent CRI for actual colour reproduction. White powder coated aluminium reflector - Die-cast aluminium / White or black coated - Die-cast aluminium heat sink / Excellent thermal Management.

Light output 1 (integrated)



Lamp type	LED	CCT	4032 K
Nominal lamp power	12.4 W	CRI	80
Total flux	1033 lm	LOR	100%
Luminous efficacy	83 lm/W	Total power	12.4 W

Mounting mode

Ceiling recessed

Shape and measurements

Height: 2.68 in
Diameter: 3.94 in
Weight: 0.2 kg

Adjustability

Fixed

Design

Color of housing: Black, White, Silver gray

Glare protection

Glare protection: UGR < 19

Electric

System power: 12.4 W
Voltage: 230 V AC
Ballast: ECG
Controller: Dimmable 1..10V, DALI
Appliance Class: III

Protection

IP: 65
Surface temperature: 40°C
Designation labels: CE