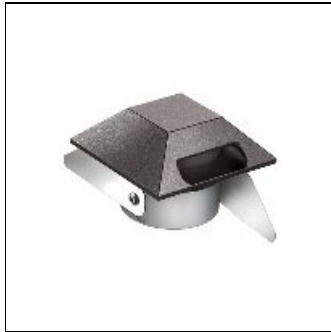


Product data sheet

BEAM 2.1 D [3000K 2X350MA]

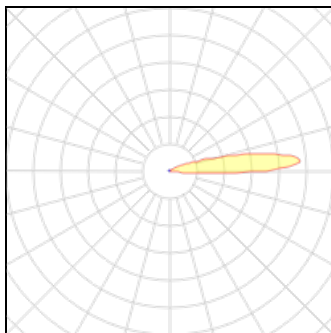
CD21215DAH

L&L LUCE&LIGHT



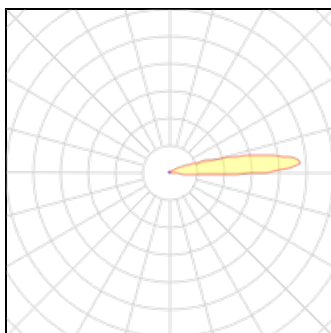
Recessed for outdoor applications, single or double beam; recessed (wall, ground); body and trim in AISI 316L stainless steel or aluminium, screen in opal polycarbonate; finishes: stainless steel, anthracite, grey; single beam: 1 power LED, double beam: 2 power LEDs; single beam: max 2W - max 500mA, double beam: max 2W (1W+1W) - max 350mA; includes 1,5 m neoprene cable, H05RN-F 2x0,35/0,75 Ø6,3 mm; series connection; total delivered lumens: single beam: 62 lm (3000K, 500mA), double beam: 31 lm (3000K, 350mA) per emission; radial optics; LED colour: white - 2700K, 3000K, 4000K, 5000K; blue; ingress protection: IP67; impact resistance: IK09; equipped with IPS; operating temperature: -10°C +45°C; screen temperature: max 40°C (Ta 25°C); Glow Wire Test: 730°; photobiological safety: risk group 1 in accordance with EN62471:2006; appliance class: III; weight 0,25 kg (aluminium trim) 0,47 kg (stainless steel trim); body dimensions 60x60x59 mm; cut-out size Ø45 mm; overall volume Ø80x100 mm; dimming using a dimmable power supply unit; accessories: outer casing WC1500, outer casing WC1501

Light output 1 (integrated)



Lamp type	LED	CCT	3000 K
Nominal lamp power	1 W	CRI	80
Total flux	51 lm	LOR	100%
Luminous efficacy	51 lm/W	Total power	1 W

Light output 2 (integrated)



Lamp type	LED	CCT	3000 K
Nominal lamp power	1 W	CRI	80
Total flux	51 lm	LOR	100%
Luminous efficacy	51 lm/W	Total power	1 W

Mounting mode

Floor recessed

Electric

System power: 2 W

Appliance Class: III

Shape and measurements

Length: 2.36 in

Width: 2.36 in

Height: 0.71 in

Adjustability

Fixed

Protection

IP: 67

IK: 09