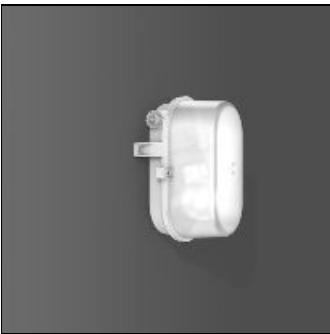


Product data sheet

SIGNALLEUCHTEN
50608.000.1
RZB

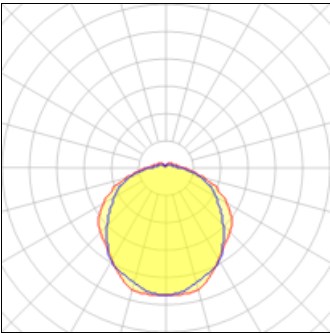


IP
43

IK
04

Series: Signalleuchten Type of Protection: IP 43 Protection Class: I Voltage: 220 - 240 V / 50 Hz Base: plastic, grey. Two cable inlets. Cover: plastic, coloured, glossy. Screw mounting. RZB luminaires for construction sites are labelled as follows: Signal luminaire DIN 67527-C-2-3: When mounted to a wall the lampholder must be pointing upwards (suspended lamp). Available Colours: white, transparent Type of Installation: Ceiling mounting, Wall (surface) Dimensions: L 195, B 132, H 115 Lamp: LED Life time: 32000 h (L70/B50) Colour Temperature: 4000K Socket 1: without socket Operating Mode Lamp 1: Converter not necessary Safety Marks: F-mark Impact Protection: IK04 (0,50 Joule) Luminaire flux LED: 500lm System power: 9W Beam Angle: 127°/111° Unified Glare Ratio: 21,2 EEC: A+

Light output 1 (integrated)



Lamp type	LED	CCT	4000 K
Nominal lamp power	9 W	CRI	80
Total flux	500 lm	LOR	100%
Luminous efficacy	56 lm/W	ULOR	9%
		Total power	9 W

Mounting mode

Wall mounted

Electric

System power: 9 W

Shape and measurements

Length: 5.20 in
Width: 7.68 in
Height: 4.53 in

Protection

IP: 43
IK: 04

Adjustability

Fixed