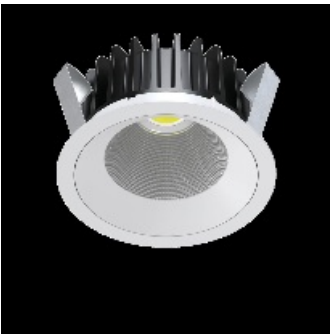


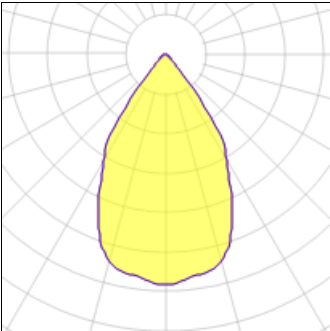
Product data sheet

INTO R160 LED DALI 23W 63° 2750LM 4000K IP20 WHITE
030561.3L02.341
LUG



Decorative downlight luminaire, adapted for tool-free assembly, for suspended ceilings, for LED light sources. The luminaire in round version with different angles of light distribution. Mounting: in the ceiling, with mounting brackets (included) Body: aluminum Power: 220-240V 50/60Hz Includes light source: yes Lifetime (L80B10): 60 000 h Warranty: 5 years Application: public utility facilities, delicatessen, supermarkets, shopping centers, offices, car showrooms, pathways, halls, classrooms, corridors, flats

Light output 1 (integrated)



Lamp type	LED	CCT	4000 K
Nominal lamp power	23 W	CRI	80
Total flux	2750 lm	LOR	100%
Luminous efficacy	120 lm/W	Total power	23 W

Mounting mode

Ceiling recessed

Shape and measurements

Height: 3.46 in

Diameter: 6.30 in

Adjustability

Fixed

Design

Color of housing: White

Electric

System power: 23 W

Controller: DALI

Appliance Class: II

Protection

IP: 20