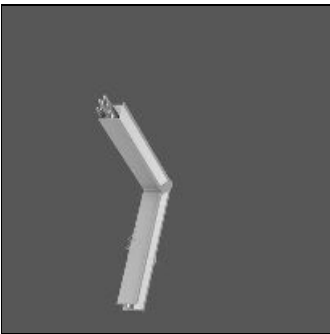


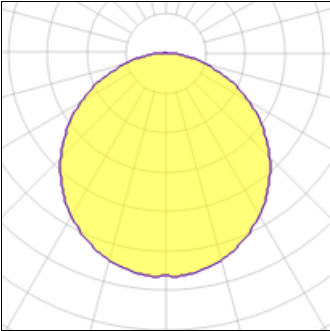
Product data sheet

LOUI 27
90-LM209-45L
RZB



Recessed module LED/5,4W-4000K L238x238 Attention: This article is only available in combination with a Less is more 27 configuration. You can find our Less is more 27 configurator under <https://www.rzb.de/en/products/loui-configurator/>

Light output 1 (integrated)



Lamp type	LED	CCT	4000 K
Nominal lamp power	6.9 W	CRI	80
Total flux	640 lm	LOR	100%
Luminous efficacy	93 lm/W	Total power	6.9 W

Mounting mode

Wall recessed

Shape and measurements

Length: 9.25 in
Width: 9.25 in
Height: 1.26 in

Adjustability

Fixed

Electric

System power: 6.9 W

Protection

IP: 00