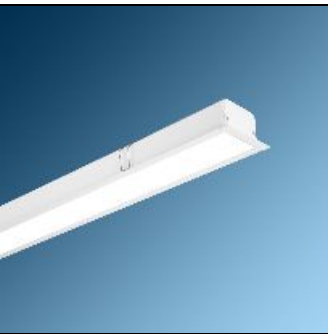


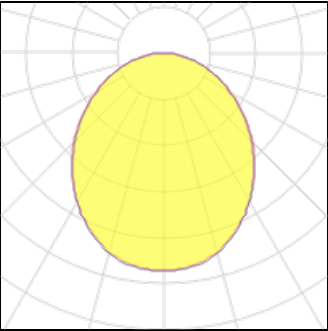
Product data sheet

INFINITY-DS 6200 LM 54W LOW POWER LED RECESSED CONTINUOUS LIGHT BAR LUMINAIRE , ACRYLIC DIFFUSER , WH..
M440DS200LED2AFK3-W
MAZINOOR



INFINITY-DS Recessed Continuous Light Bar is Mazinoor state of the art design for continuous light bar application. Aesthetically designed INFINITY-DS is offered in LED versions with unparalleled performance.Uniform light distribution, energy saving, glare control are among the highlights of this luminaire.

Light output 1 (integrated)



Lamp type	LED	CCT	4000 K
Nominal lamp power	54 W	CRI	70
Total flux	6200 lm	LOR	100%
Luminous efficacy	115 lm/W	Total power	54 W

Mounting mode

Ceiling recessed, Pendant

Electric

System power: 54 W

Shape and measurements

Length: 78.74 in
Width: 2.76 in
Height: 3.35 in

Adjustability

Fixed