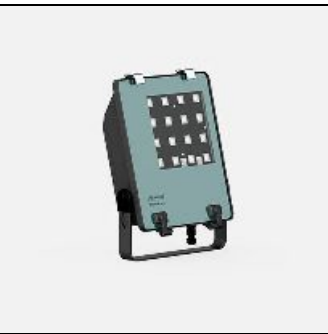


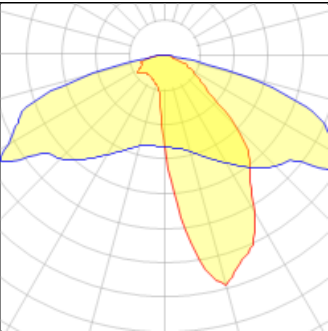
Product data sheet

GANDALF 26 FLOODLIGHTS,PROJECTORS
GA-51111-T2-W40
LIGMAN



- Lamp LED - CRI Ra > 80 - MacAdam Ellipse 3 SDCM - Colour 3000K , 4000K - Die-cast aluminium housing pre-treated before powder coating ensuring high corrosion resistance - Single cable entry - Through wiring on request - Stainless steel fasteners in grade 316 - Durable silicone rubber gasket - High-efficiency PMMA lens - Clear toughened glass - Hot-dipped galvanised steel mounting bracket allows for ceiling, wall or surface mounting - Integral control gear

Light output 1 (integrated)



Lamp type	LED	CCT	4032 K
Nominal lamp power	54.3 W	CRI	80
Total flux	5337 lm	LOR	100%
Luminous efficacy	98 lm/W	Total power	54.3 W

Mounting mode

Standing / Bollard, Wall mounted

Shape and measurements

Length: 18.31 in
Width: 12.60 in
Height: 4.72 in
Weight: 7 kg

Adjustability

Free

Design

Color of housing: Black, White, Silver gray

Glare protection

Glare protection: UGR < 19

Electric

System power: 54.3 W
Voltage: 230 V AC
Ballast: ECG
Controller: Dimmable 1..10V, DALI
Appliance Class: I

Protection

IP: 66
IK: 08
Surface temperature: 40°C