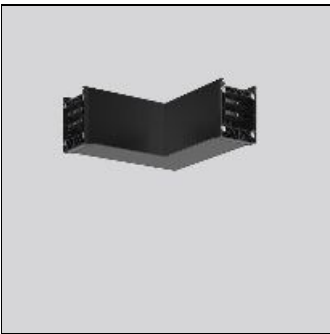


Product data sheet

LINEDO L-VERBINDUNG
982773.003.1
RZB

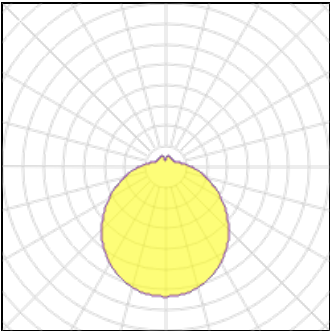


IP
20

IK
02

Series: LINEDO L-connector, 14-pole, connection socket / socket. Housing: extruded aluminium profile, powder-coated. Cover made of plastic, surface like housing. LINEDO plug system, plastic, black. Easy connection for rigid or flexible wires. 2 membrane cable entries (M25). Suitable for power supply in 7-pole version. Ready prewired. Colour-coded individual cables enable easy electromechanical separation. Colour: jet black (RAL 9005) Length: 185 mm Width: 185 mm Height: 76 mm Weight: 730 g Type of Installation: Ceiling mounting, Suspension cable/chain

Light output 1 (integrated)



Lamp type	LED	CCT	4000 K
Nominal lamp power	0.01 W	CRI	80
Total flux	1 lm	LOR	100%
Luminous efficacy	100 lm/W	Total power	0.01 W

Mounting mode

Ceiling mounted

Shape and measurements

Length: 7.28 in
Width: 7.28 in
Height: 2.99 in

Adjustability

Fixed

Design

Color of housing: Black

Electric

System power: 0.01 W

Protection

IP: 20
IK: 02